



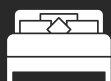
HOME REFLECTIONS DESIGN

THE BETTY

155 GRAYBRIAR DR



2 Living Rooms



3 Bedrooms



2.5 Bathrooms



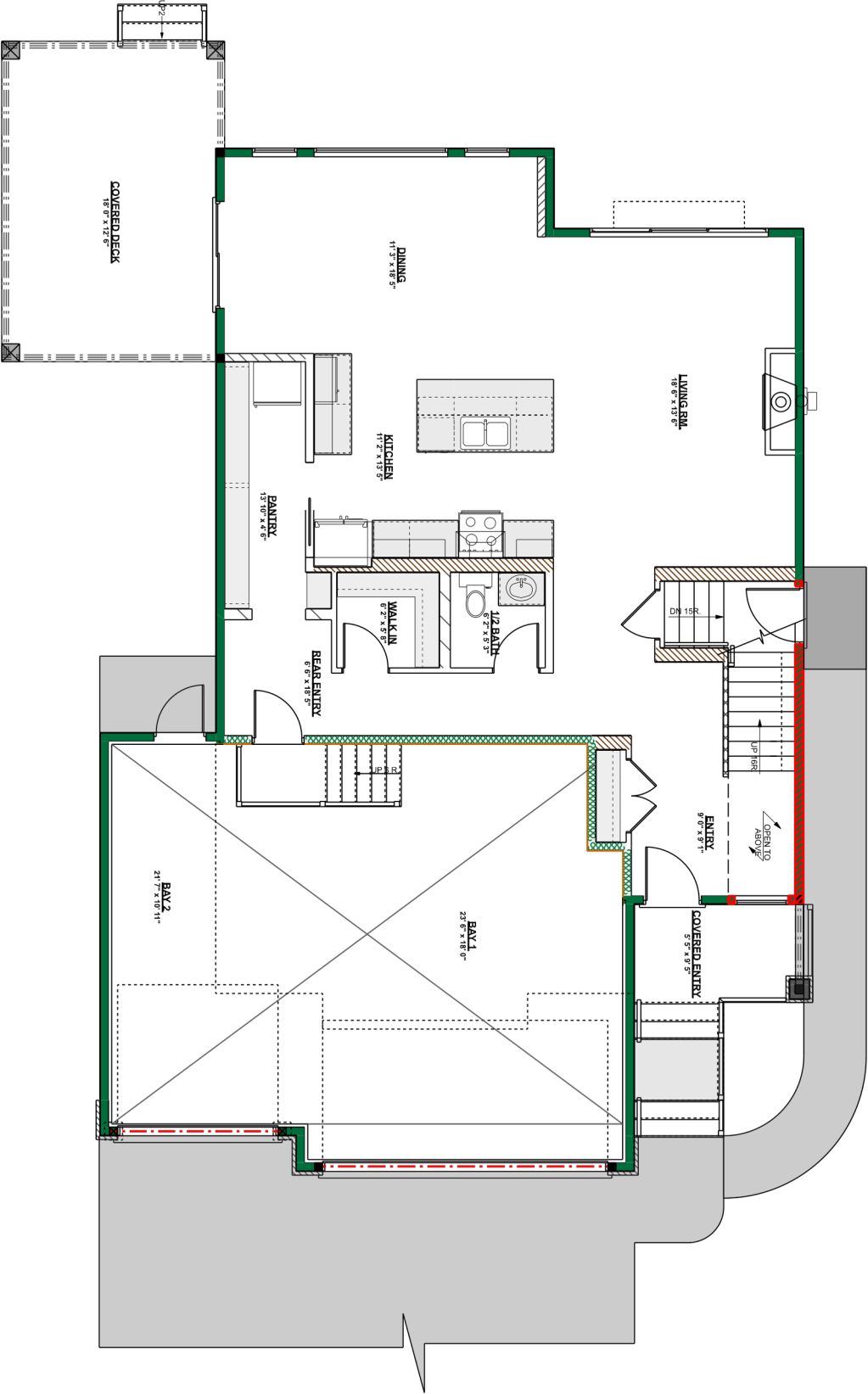
Triple Garage



2 Storey



2557 Square Feet



THE BETTY

Main Floor



2 Living Rooms



3 Bedrooms



2.5 Bathrooms



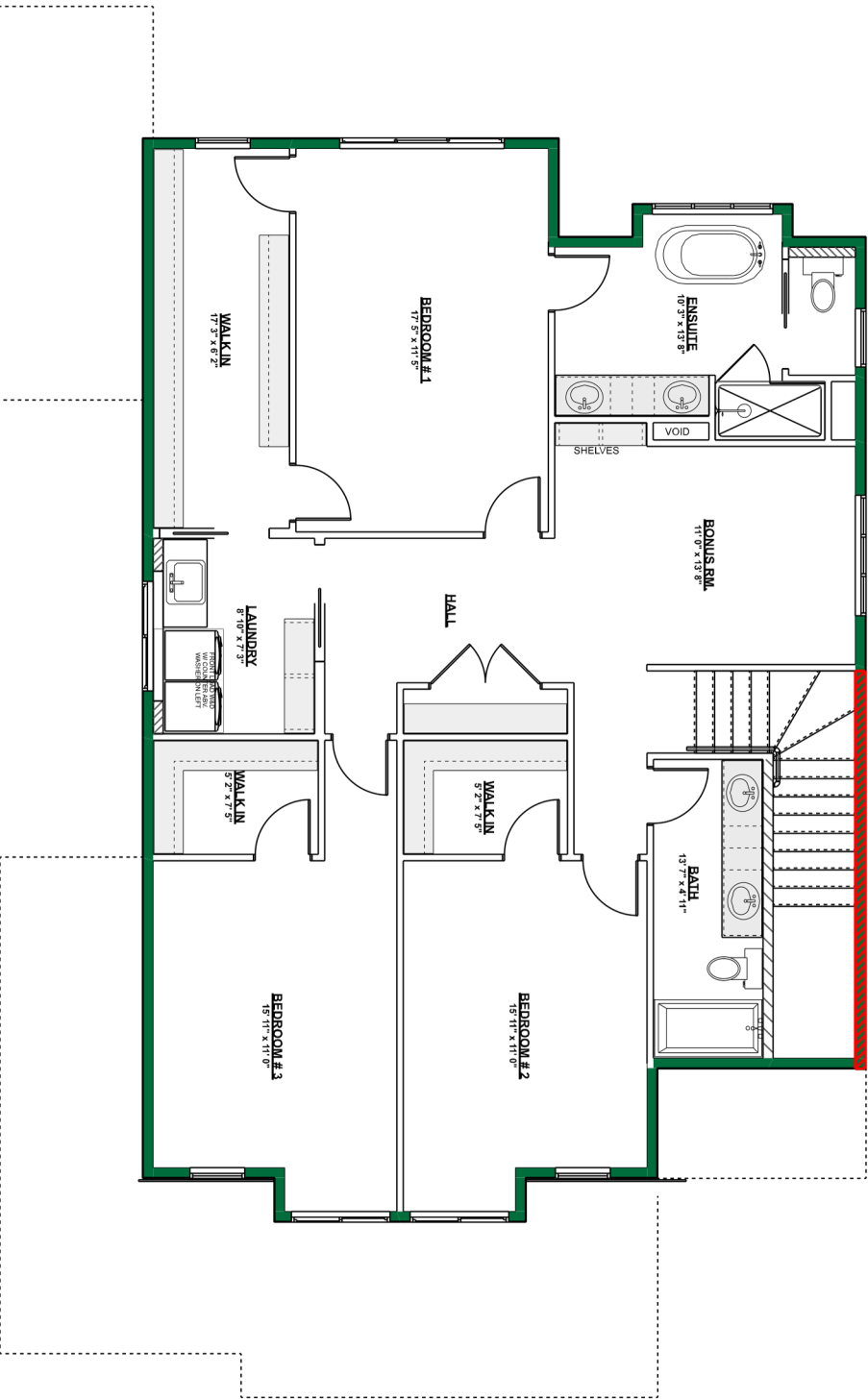
Triple Garage



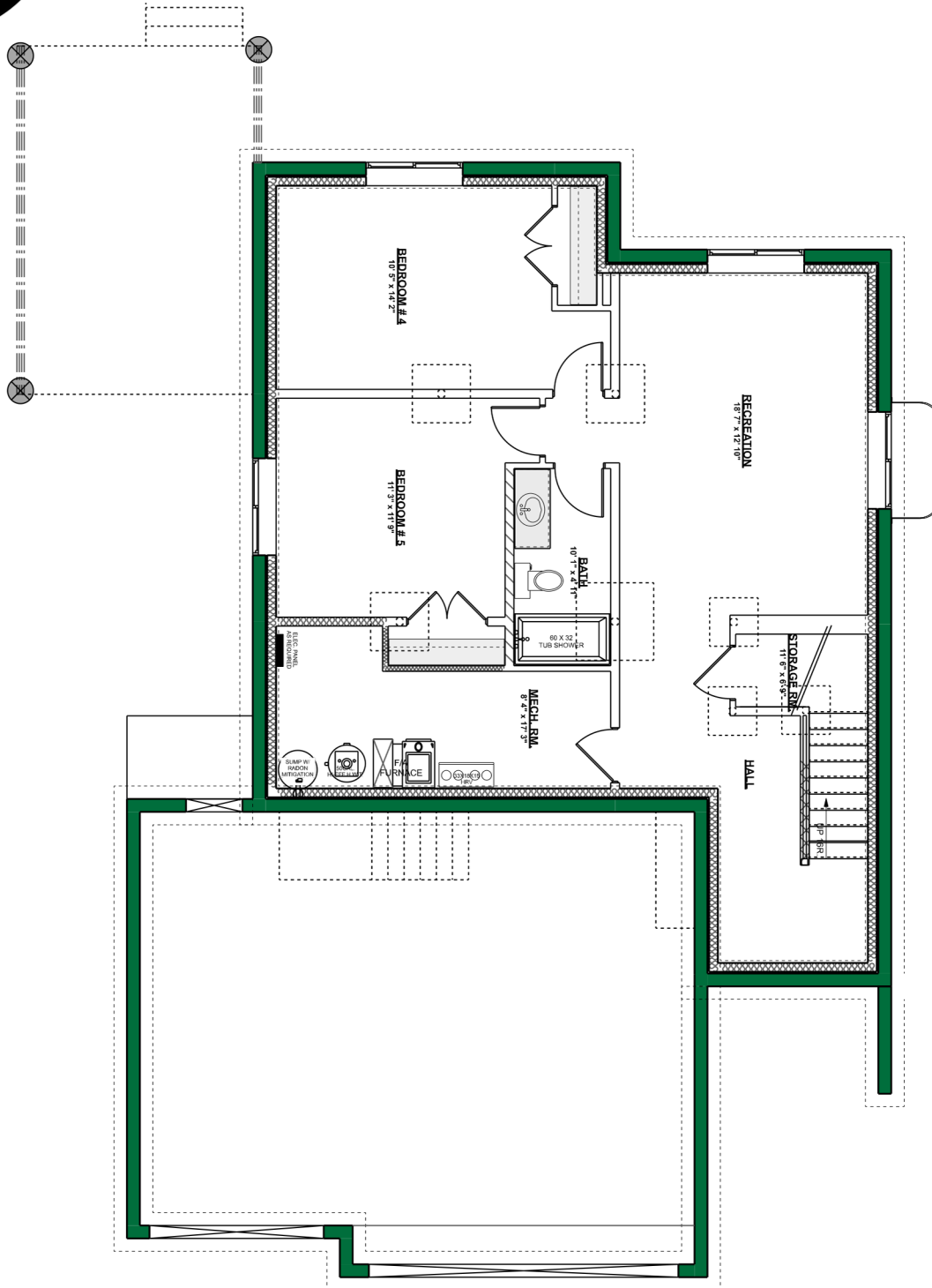
2 Storey



2557 Square Feet



THE BETTY
Second Floor



THE BETTY
Optional Basement

					
2 Living Rooms	3 Bedrooms	2.5 Bathrooms	Triple Garage	2 Storey	2557 Square Feet



CONTACT US AT

HRD HOMES

WWW.BUILDHRD.COM

[@HRDHOMES_](#)

5015 51 Ave

Stony Plain, AB

sales@buildhrd.com

587-597-3205 Press #1 for Sales



These are preliminary renderings ONLY and are subject to change



HOME FEATURES

- OVERSIZED RANGE HOODFAN DESIGN
- LARGE FLOW THROUGH PANTRY
- CUSTOM FIREPLACE DESIGN WITH BUILT-IN SHELVING
- CHAMPAGNE BRONZE & CHROME HARDWARE & FIXTURES
- PRIMARY BEDROOM FEATURE WALL WITH HIDDEN DOORS TO WALK-IN CLOSET
- TRIPLE CAR GARAGE
- AIR CONDITIONING
- GARAGE WITH HEATER, FLOOR DRAIN AND HOT & COLD HOSE BIBS

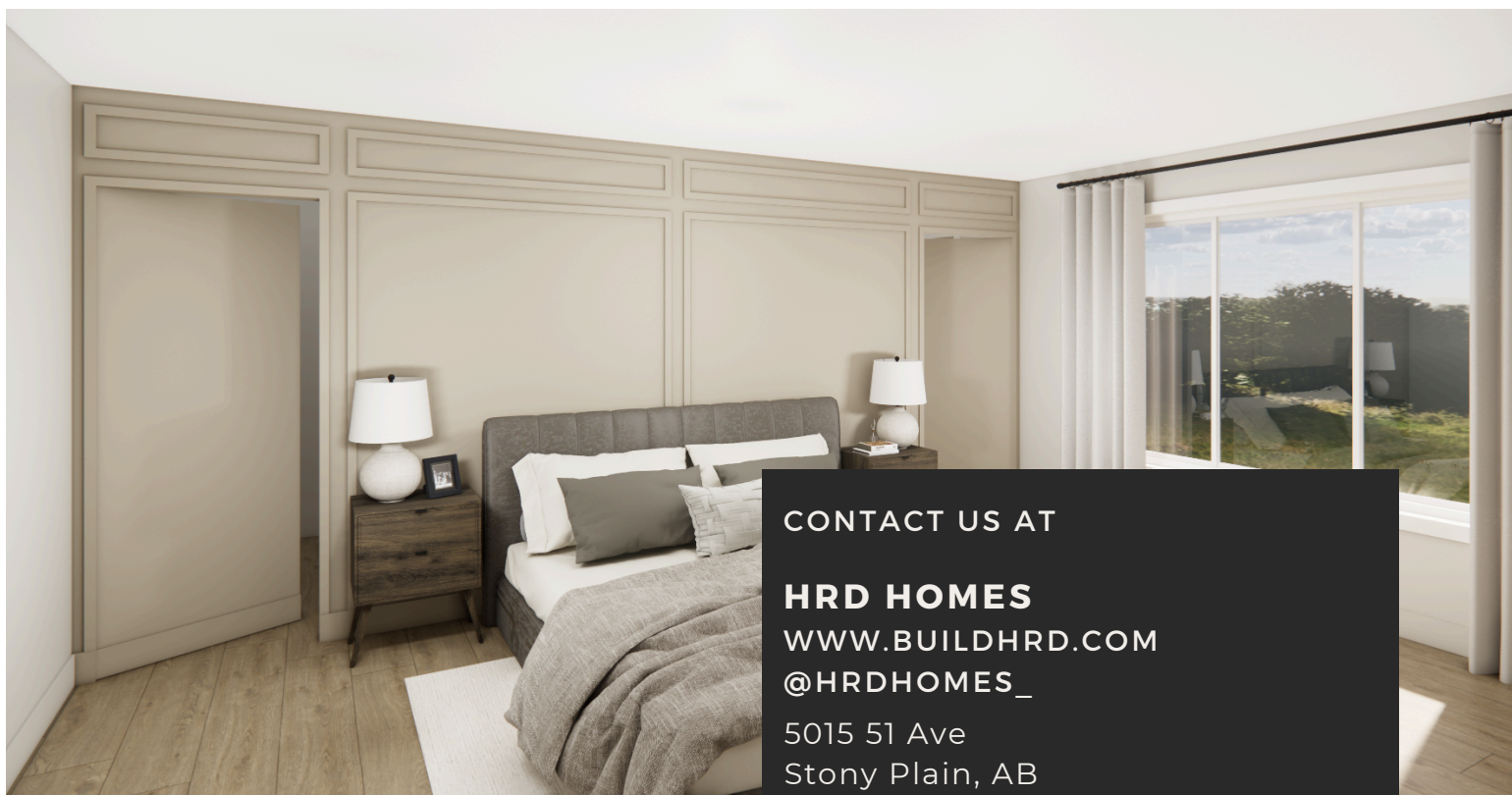


155 GRAYBRIAR DR.
STONY PLAIN, AB

UPGRADED FEATURES & ENHANCEMENTS

THIS HOME INCLUDES PREMIUM UPGRADES BEYOND THE STANDARD SPECIFICATIONS, OFFERING ADDED VALUE, STYLE, AND FUNCTIONALITY!

- **CABINETRY:** ADDED FURNITURE KICK AND COLUMNS TO ELEVATE KITCHEN ISLAND
- **HOODFAN:** CUSTOM OVERSIZED HOODFAN BOX WITH BLOWER INSERT UPGRADED FROM A STAINLESS STEEL CHIMNEY STYLE FAN
- **COUNTERTOPS:** 2CM QUARTZ COUNTERTOPS IN LAUNDRY ROOM UPGRADED FROM LAMINATE TOPS
- **PLUMBING:** CHAMPAGNE BRONZE KITCHEN PLUMBING FIXTURES UPGRADED FROM CHROME
- **FIREPLACE:** CUSTOM DESIGNED FIREPLACE WITH BUILT-IN SHELVING
- **PRIMARY BEDROOM FEATURE:** CUSTOM DESIGNED FEATURE WALL PAINTED IN AN ACCENT COLOUR WITH HIDDEN DOORS INTO THE WALK-IN CLOSET



CONTACT US AT

HRD HOMES

WWW.BUILDHRD.COM

[@HRDHOMES_](https://www.instagram.com/HRDHOMES_)

5015 51 Ave

Stony Plain, AB

sales@buildhrd.com

587-597-3205 Press #1 for Sales