



# HOME REFLECTIONS DESIGN

---

26 GRAYSON GREEN

**\$682,000**



2 Living Rooms



3 Bedrooms



2.5 Bathrooms



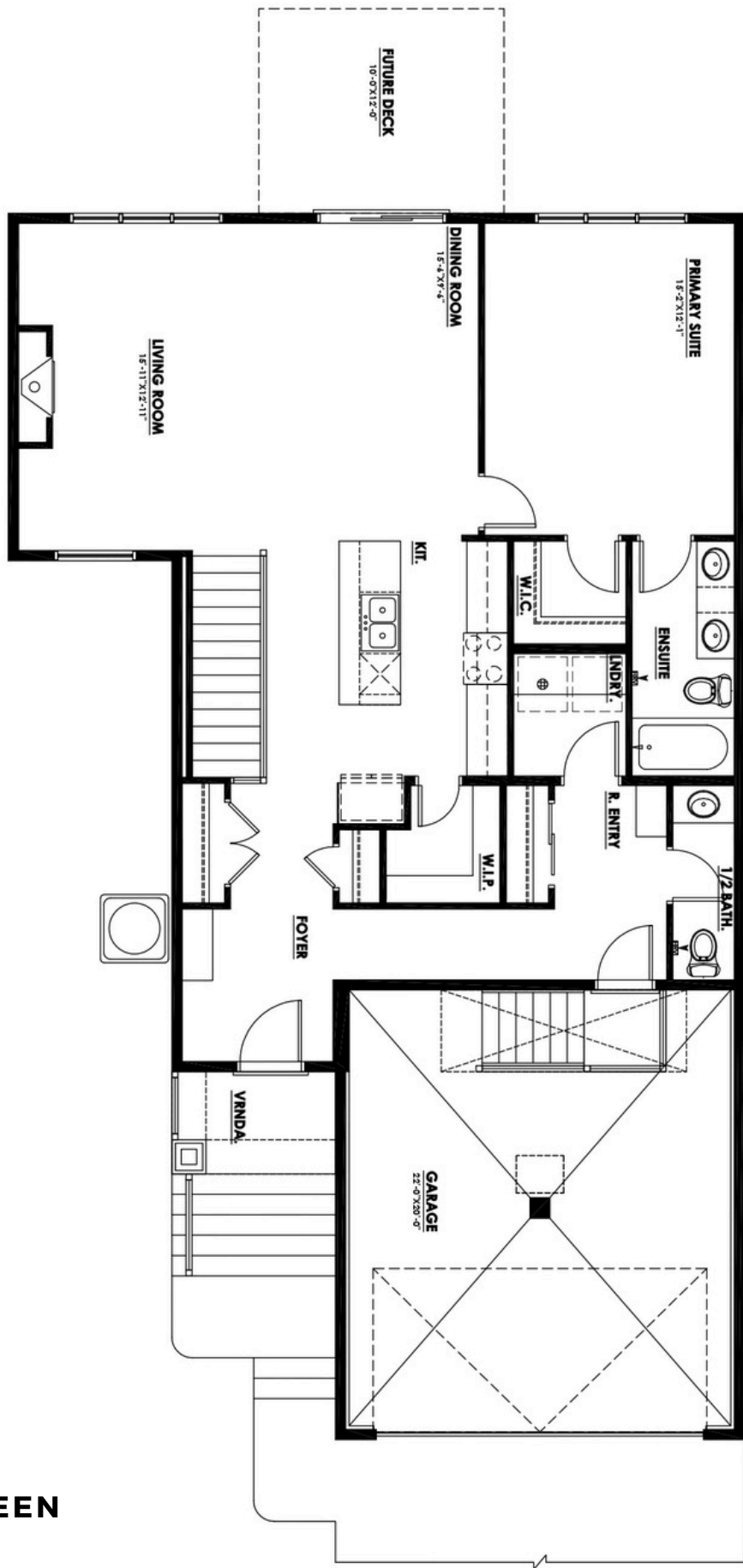
Double Garage



Bungalow +  
Developed Basement



1235 Square Feet

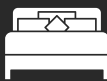


**26 GRAYSON GREEN**

Main Floor



2 Living Rooms



3 Bedrooms



2.5 Bathrooms



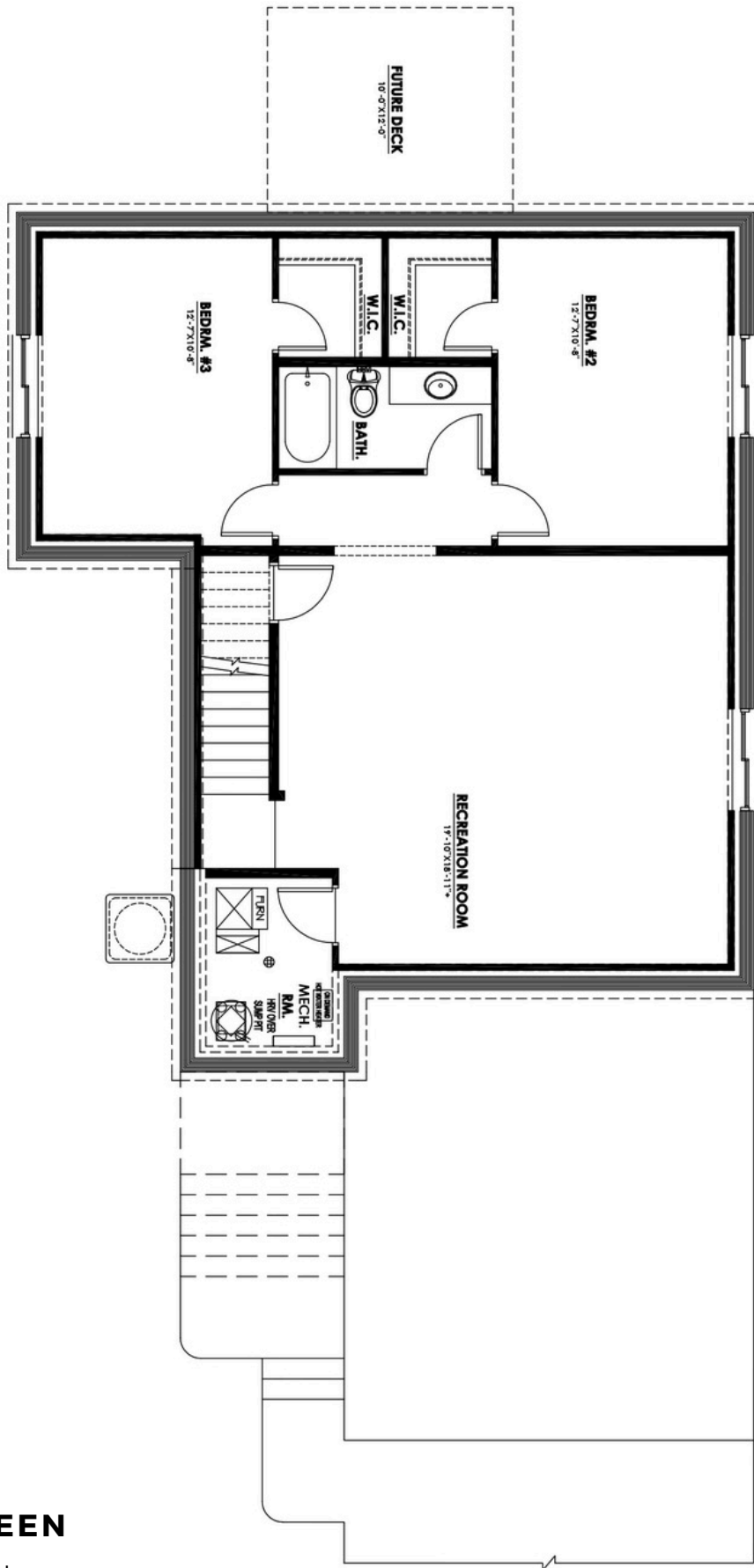
Double Garage



Bungalow +  
Developed Basement



1235 Square Feet



**26 GRAYSON GREEN**

Developed Basement



2 Living Rooms



3 Bedrooms



2.5 Bathrooms



Double Garage



Bungalow +  
Developed Basement



1235 Square Feet





CONTACT US AT

**HRD HOMES**

[WWW.BUILDHRD.COM](http://WWW.BUILDHRD.COM)

[@HRDHOMES\\_](https://www.instagram.com/HRDHOMES_)

5015 51 Ave

Stony Plain, AB

[sales@buildhrd.com](mailto:sales@buildhrd.com)

587-597-3205 Press #1 for Sales



## HOME FEATURES

- CUSTOM CABINETRY WITH MATCHING HOODFAN
- FLOW THROUGH PANTRY
- CUSTOM DESIGNED MASONRY FIREPLACE WITH FEATURE WALL MOULDING
- CHAMPAGNE BRONZE & CHROME FIXTURES AND HARDWARE
- AIR CONDITIONING
- ATTACHED DOUBLE CAR GARAGE WITH HEATER, FLOOR DRAIN AND HOT & COLD HOSE BIBS
- FULLY DEVELOPED BASEMENT





**26 GRAYSON GREEN**  
STONY PLAIN, AB

## UPGRADED FEATURES & ENHANCEMENTS

THIS HOME INCLUDES PREMIUM UPGRADES BEYOND THE STANDARD SPECIFICATIONS, OFFERING ADDED VALUE, STYLE, AND FUNCTIONALITY!

- **CABINETRY:** 48"H UPPER CABINETS UPGRADED FROM 42"H  
DOUBLE WASTE BIN PULL-OUT ADDED TO KITCHEN ISLAND  
STAINED MAPLE KITCHEN ISLAND UPGRADED FROM THERMOFOIL
- **HOODFAN/RANGE WALL:** CUSTOM DESIGNED HOODFAN WITH BLOWER INSERT  
TO MATCH CABINETRY
- **PLUMBING:** CHAMPAGEN BRONZE KITCHEN FAUCET UPGRADED FROM CHROME
- **ENSUITE SHOWER TILE:** 2X9 BRICK TILE ON SIDE WALLS WITH ACCENT 12X24 TILE  
ON THE BACK WALL UPGRADED FROM STANDARD 12X24 WALL TILE  
THROUGHOUT
- **FIREPLACE:** MASONRY FIREPLACE WITH STAINED MAPLE MANTLE AND  
DECORATIVE WALL MOULDING ABOVE
- **ACCENT WALLS:** CUSTOM DESIGNED WALL MOULDING IN THE DINING ROOM,  
GREAT ROOM AND FOYER BENCH  
CUSTOM DESIGNED WALL MOULDING PAINTED IN A NEUTRAL ACCENT COLOUR  
IN THE PRIMARY BEDROOM
- **LAUNDRY ROOM:** CUSTOM BUILT FLOATING SHELVES PROVIDE PLENTY OF  
STORAGE
- **BASEMENT:** FULLY DEVELOPED BASEMENT



CONTACT US AT

**HRD HOMES**

[WWW.BUILDHRD.COM](http://WWW.BUILDHRD.COM)

[@HRDHOMES\\_](https://www.instagram.com/HRDHOMES_)

5015 51 Ave

Stony Plain, AB

[sales@buildhrd.com](mailto:sales@buildhrd.com)

587-597-3205 Press #1 for Sales