



# HOME REFLECTIONS DESIGN

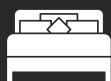
---

30 GRAYSON GREEN

**\$695,000**



1 Living Room



2 Bedrooms



1.5 Bathrooms



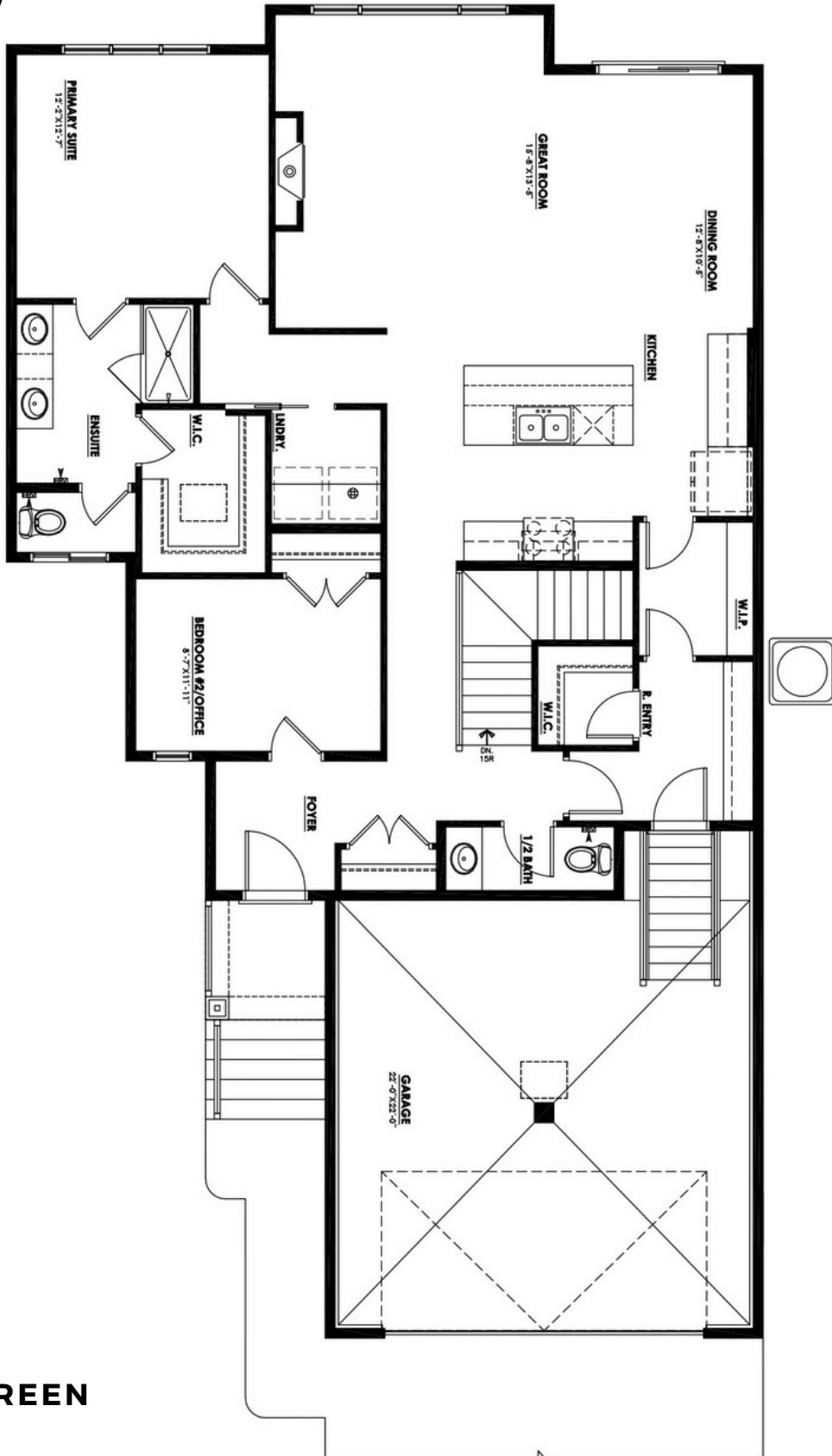
Double Garage



Bungalow +  
Optional Basement



1498 Square Feet

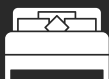


**30 GRAYSON GREEN**

Main Floor



1 Living Room



2 Bedrooms



1.5 Bathrooms



Double Garage



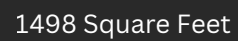
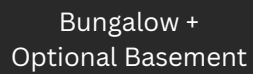
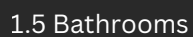
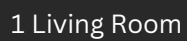
Bungalow +  
Optional Basement



1498 Square Feet



### Optional Basement Development







CONTACT US AT

**HRD HOMES**

[WWW.BUILDHRD.COM](http://WWW.BUILDHRD.COM)

[@HRDHOMES\\_](https://www.instagram.com/HRDHOMES_)

5015 51 Ave

Stony Plain, AB

[sales@buildhrd.com](mailto:sales@buildhrd.com)

587-597-3205 Press #1 for Sales



## HOME FEATURES

- CUSTOM DESIGNED HOODFAN FEATURE WITH BUILT-IN SPICE NICHE SHELVES
- FLOW THROUGH PANTRY
- CUSTOM DESIGNED FIREPLACE WITH BUILT-IN SHELVING
- CHAMPAGNE BRONZE & CHROME FIXTURES AND HARDWARE
- AIR CONDITIONING
- ATTACHED DOUBLE CAR GARAGewith HEATER, FLOOR DRAIN AND HOT & COLD HOSE BIBS
- OPTION TO DEVELOP THE BASEMENT





**30 GRAYSON GREEN**  
STONY PLAIN, AB

## UPGRADED FEATURES & ENHANCEMENTS

THIS HOME INCLUDES PREMIUM UPGRADES BEYOND THE STANDARD SPECIFICATIONS, OFFERING ADDED VALUE, STYLE, AND FUNCTIONALITY!

- **CABINETRY:** 45"H UPPER CABINETS UPGRADED FROM 42"H  
DOUBLE WASTE BIN PULL-OUT ADDED TO KITCHEN ISLAND  
6"H BULKHEAD TO GIVE CABINETS A BUILT-IN FEEL
- **COUNTERTOPS:** 2CM QUARTZ COUNTERTOPS IN LAUNDRY ROOM UPGRADED  
FROM LAMINATE TOPS
- **HOODFAN/RANGE WALL:** CUSTOM DESIGNED BUILT-IN HOODFAN WITH BLOWER  
INSERT UPGRADED FROM A STAINLESS STEEL CHIMNEY STYLE FAN  
INSET NICE SHELVING FOR SPICES OR DECOR ON EACH SIDE OF RANGE
- **PLUMBING:** CHAMPAGEN BRONZE KITCHEN FAUCET UPGRADED FROM CHROME
- **ENSUITE SHOWER:** FULL WIDTH SHOWER LEDGE UPGRADED FROM 24"W X 12"H  
SHOWER NICHE  
ACCENT 2.5" X 8" TILE ABOVE LEDGE UPGRADED FROM 12X24 STANDARD WALL  
TILE
- **FIREPLACE BUILT-INS:** CUSTOM BUILT-IN SHELVING WITH ACCENT WOOD TRIM  
ON EACH SIDE OF FIREPLACE
- **ACCENT WALLS:** FEATURE WALLS WITH CUSTOM DESIGNED MOULDING IN THE  
DINING ROOM AND PRIMARY BEDROOM  
CUSTOM WALL MOULING BEHIND THE MIRROR IN THE HALF BATH



CONTACT US AT

**HRD HOMES**

[WWW.BUILDHRD.COM](http://WWW.BUILDHRD.COM)

[@HRDHOMES\\_](https://www.instagram.com/HRDHOMES_)

5015 51 Ave

Stony Plain, AB

[sales@buildhrd.com](mailto:sales@buildhrd.com)

587-597-3205 Press #1 for Sales