



# HOME REFLECTIONS DESIGN

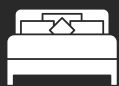
7 SYDWYCK CI



These are preliminary renderings ONLY and are subject to change



1 Living Rooms



2 Bedrooms



1.5 Bathrooms



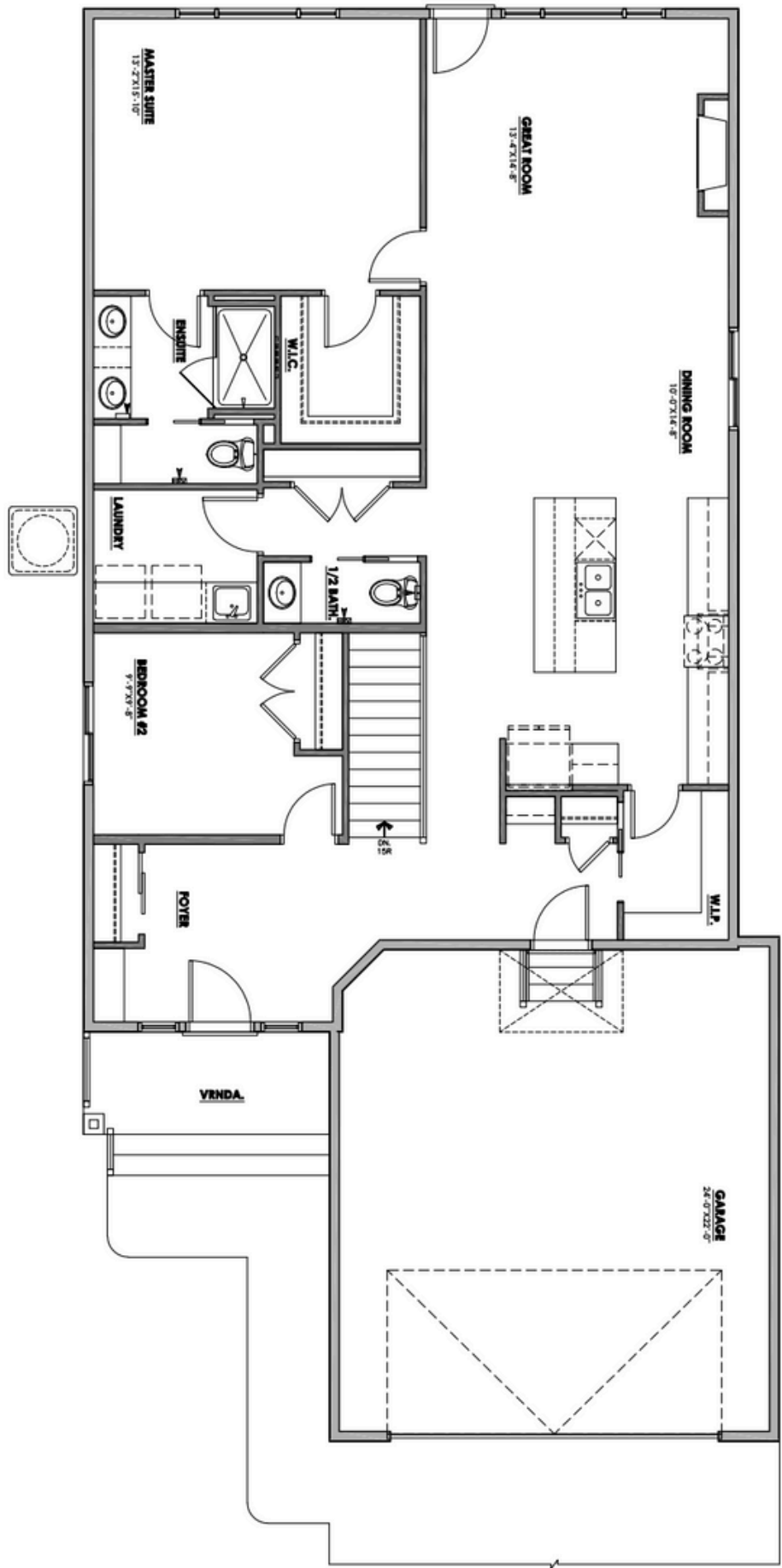
Double Garage



Bungalow



1524 Square Feet

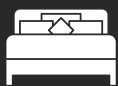


**7 SYDWYCK CRES**

Main Floor



1 Living Rooms



2 Bedrooms



1.5 Bathrooms



Double Garage



Bungalow



1524 Square Feet





CONTACT US AT

**HRD HOMES**

[WWW.BUILDHRD.COM](http://WWW.BUILDHRD.COM)

[@HRDHOMES\\_](https://www.instagram.com/HRDHOMES_)

5015 51 Ave

Stony Plain, AB

[sales@buildhrd.com](mailto:sales@buildhrd.com)

587-991-9405



## HOME FEATURES

- CUSTOM VENETIAN PLASTER HOOD FAN & FIREPLACE DESIGN
- OAK WOOD ACCENTS
- CUSTOM DESIGNED FEATURE WALLS IN THE DINING ROOM & PRIMARY BEDROOM
- DOUBLE GARAGE & RV BAY
- AIR CONDITIONING
- GARAGE WITH HEATER, FLOOR DRAIN AND HOT & COLD HOSE BIBS

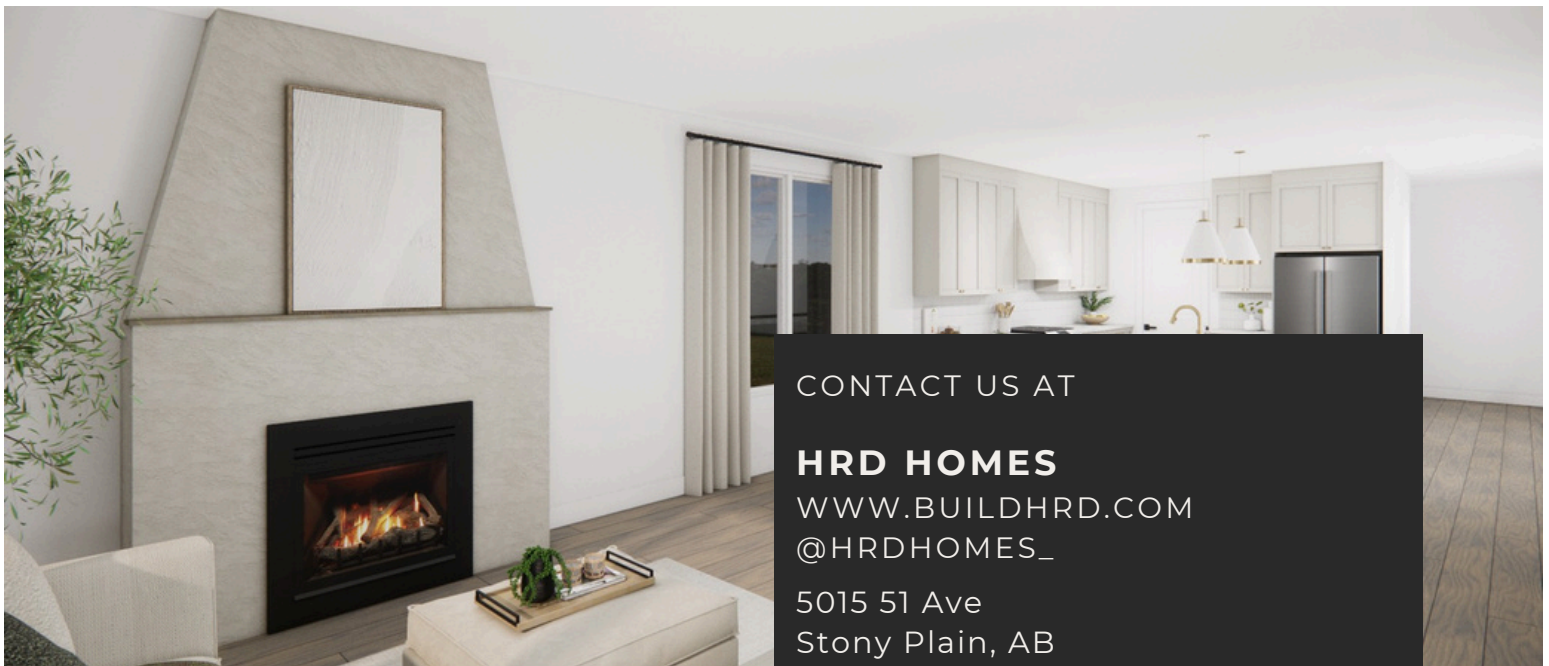


## 7 SYDWYCK CIRCLE SPRUCE GROVE

### UPGRADED FEATURES & ENHANCEMENTS

THIS HOME INCLUDES PREMIUM UPGRADES BEYOND THE STANDARD SPECIFICATIONS, OFFERING ADDED VALUE, STYLE, AND FUNCTIONALITY!

- **CABINETRY:** 48"H UPPER CABINETS UPGRADED FROM 42"H  
STAINED MAPLE ISLAND UPGRADED FROM THERMOFOIL  
ADDED FURNITURE KICK TO ELEVATE KITCHEN ISLAND
- **COUNTERTOPS:** 2CM QUARTZ COUNTERTOPS IN LAUNDRY ROOM UPGRADED  
FROM LAMINATE TOPS
- **HOODFAN:** VENETIAN PLASTERED HOODFAN WITH BLOWER INSERT UPGRADED  
FROM A STAINLESS STEEL CHIMNEY STYLE FAN
- **KITCHEN & ENSUITE PLUMBING:** CHAMPAGNE BRONZE PLUMBING FIXTURES &  
BATHWARE UPGRADED FROM CHROME
- **ENSUITE SHOWER TILE:** 2X6 VERTICAL STACKED SHOWER WALL TILE UPGRADED  
FROM 12X24 STANDARD WALL TILE
- **FIREPLACE:** TAPERED VENETIAN PLASTERED FIREPLACE WITH STAINED MAPLE  
MANTLE



CONTACT US AT

**HRD HOMES**

[WWW.BUILDHRD.COM](http://WWW.BUILDHRD.COM)

[@HRDHOMES\\_](https://www.instagram.com/HRDHOMES_)

5015 51 Ave

Stony Plain, AB

[sales@buildhrd.com](mailto:sales@buildhrd.com)

587-991-9405