



HOME REFLECTIONS DESIGN

FINLEY



These are preliminary renderings ONLY and are subject to change



2 Living Rooms



5 Bedrooms



2.5 Bathrooms



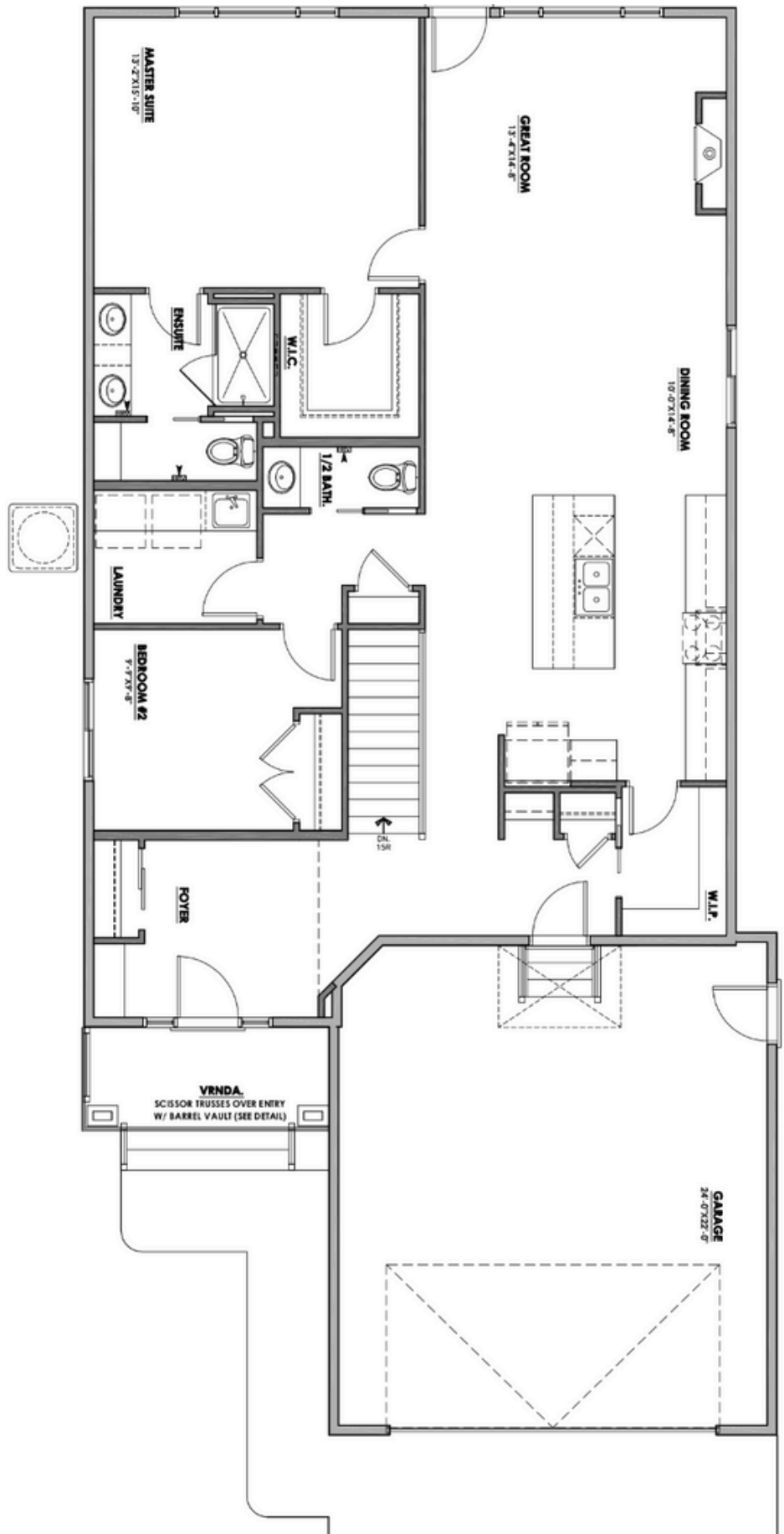
Double Garage



Bungalow



1524 Square Feet



3 SYDWYCK CI

Main Floor



2 Living Rooms



5 Bedrooms



2.5 Bathrooms



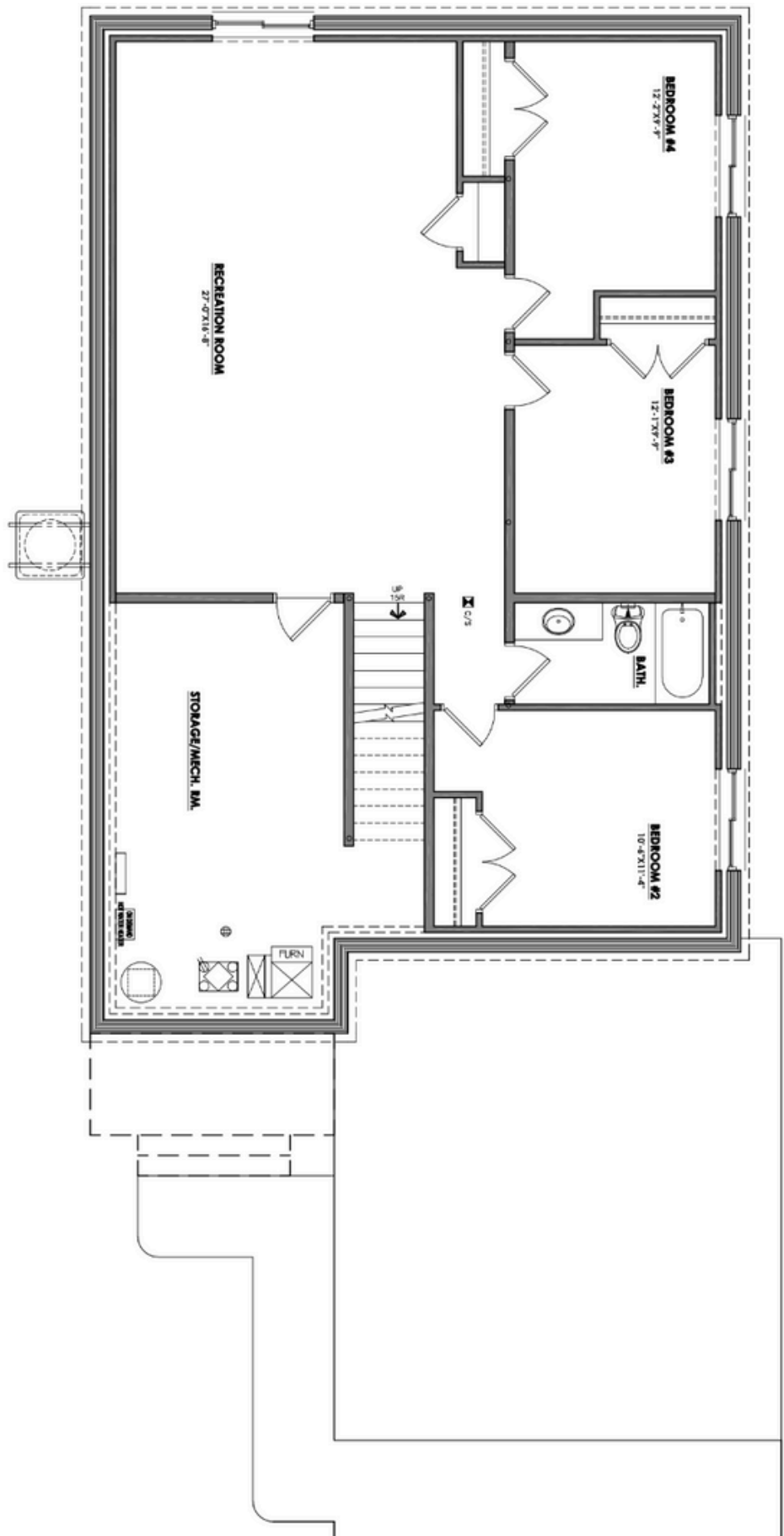
Double Garage



2-Story



1524 Square Feet

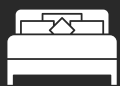


3 SYDWYCK CI

Foundation Floor



2 Living Rooms



5 Bedrooms



2.5 Bathrooms



Double Garage



2-Story



1524 Square Feet



CONTACT US AT

HRD HOMES

WWW.BUILDHRD.COM

[@HRDHOMES_](https://www.instagram.com/HRDHOMES_)

5015 51 Ave

Stony Plain, AB

sales@buildhrd.com

587-991-9405



HOME FEATURES

- CUSTOM VENETIAN PLASTER HOOD FAN & FIREPLACE DESIGN
- OAK WOOD ACCENTS
- CUSTOM DESIGNED FEATURE WALLS IN THE DINING ROOM & PRIMARY BEDROOM
- DOUBLE GARAGE & RV BAY
- AIR CONDITIONING
- GARAGE WITH HEATER, FLOOR DRAIN AND HOT & COLD HOSE BIBS

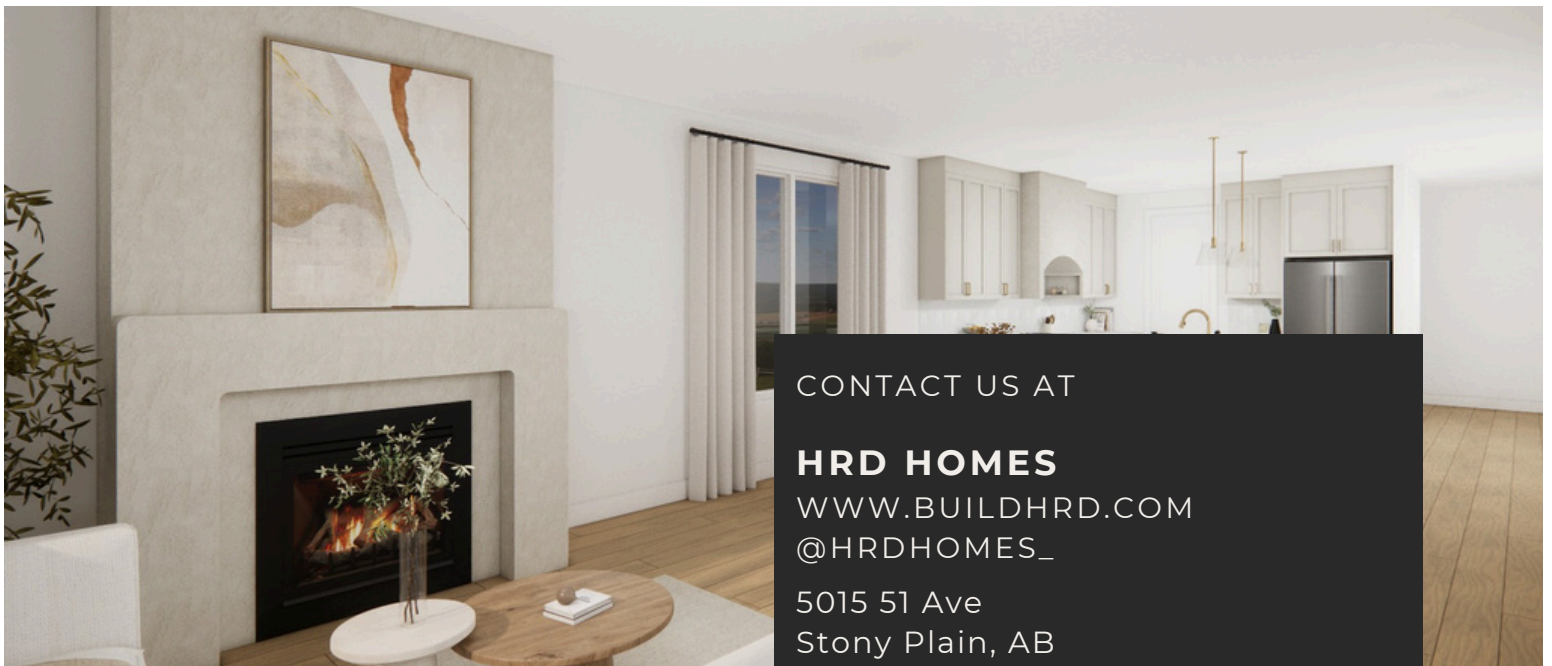


3 SYDWYCK CIRCLE SPRUCE GROVE

UPGRADED FEATURES & ENHANCEMENTS

THIS HOME INCLUDES PREMIUM UPGRADES BEYOND THE STANDARD SPECIFICATIONS, OFFERING ADDED VALUE, STYLE, AND FUNCTIONALITY!

- **EXTERIOR:** PREMIUM SIDING COLOURS UPGRADED FROM STANDARD COLOURS
- **CABINETRY:** 48"H UPPER CABINETS UPGRADED FROM 42"H
ADDED FURNITURE KICK TO ELEVATE KITCHEN ISLAND
- **COUNTERTOPS:** 2CM QUARTZ COUNTERTOPS IN LAUNDRY ROOM UPGRADED
FROM LAMINATE TOPS
- **HOODFAN:** VENETIAN PLASTERED HOODFAN WITH CURVED ACCENT AND BUILT-
IN STORAGE NICHES UPGRADED FROM A STAINLESS STEEL CHIMNEY STYLE FAN
- **KITCHEN & ENSUITE PLUMBING:** CHAMPAGNE BRONZE PLUMBING FIXTURES &
BATHWARE UPGRADED FROM CHROME
- **ENSUITE SHOWER TILE:** 2X6 VERTICAL STACKED SHOWER WALL TILE UPGRADED
FROM 12X24 STANDARD WALL TILE
- **FIREPLACE:** VENETIAN PLASTERED FIREPLACE WITH ADDED CURVED CORNERS
TO ENHANCE THE AESTHETIC



CONTACT US AT

HRD HOMES

WWW.BUILDHRD.COM

@HRDHOMES_

5015 51 Ave

Stony Plain, AB

sales@buildhrd.com

587-991-9405