



# HOME REFLECTIONS DESIGN

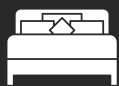
24 SYDWYCK CI



These are preliminary renderings ONLY and are subject to change



2 Living Rooms



3 Bedrooms



2.5 Bathrooms



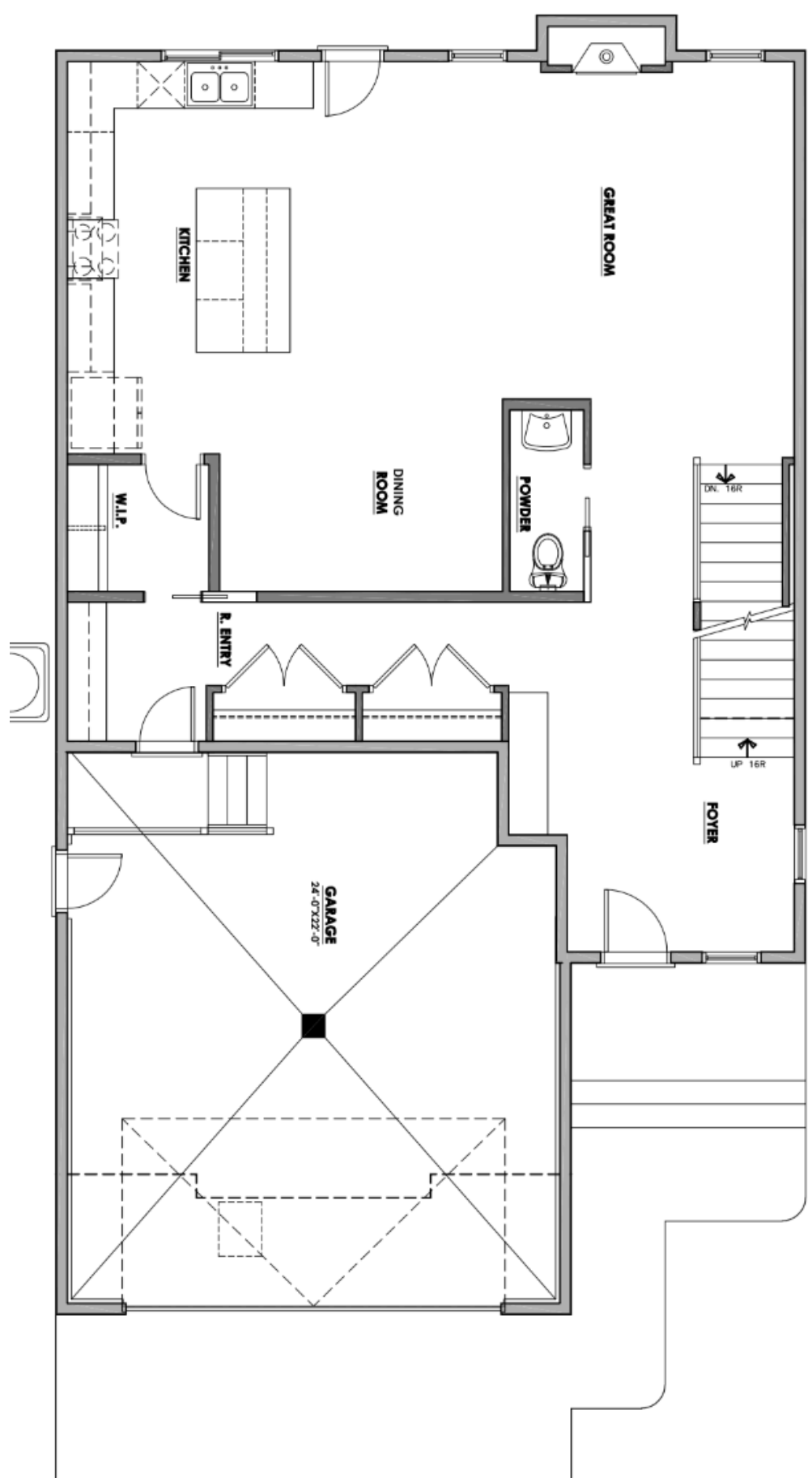
Double Garage



2-Story



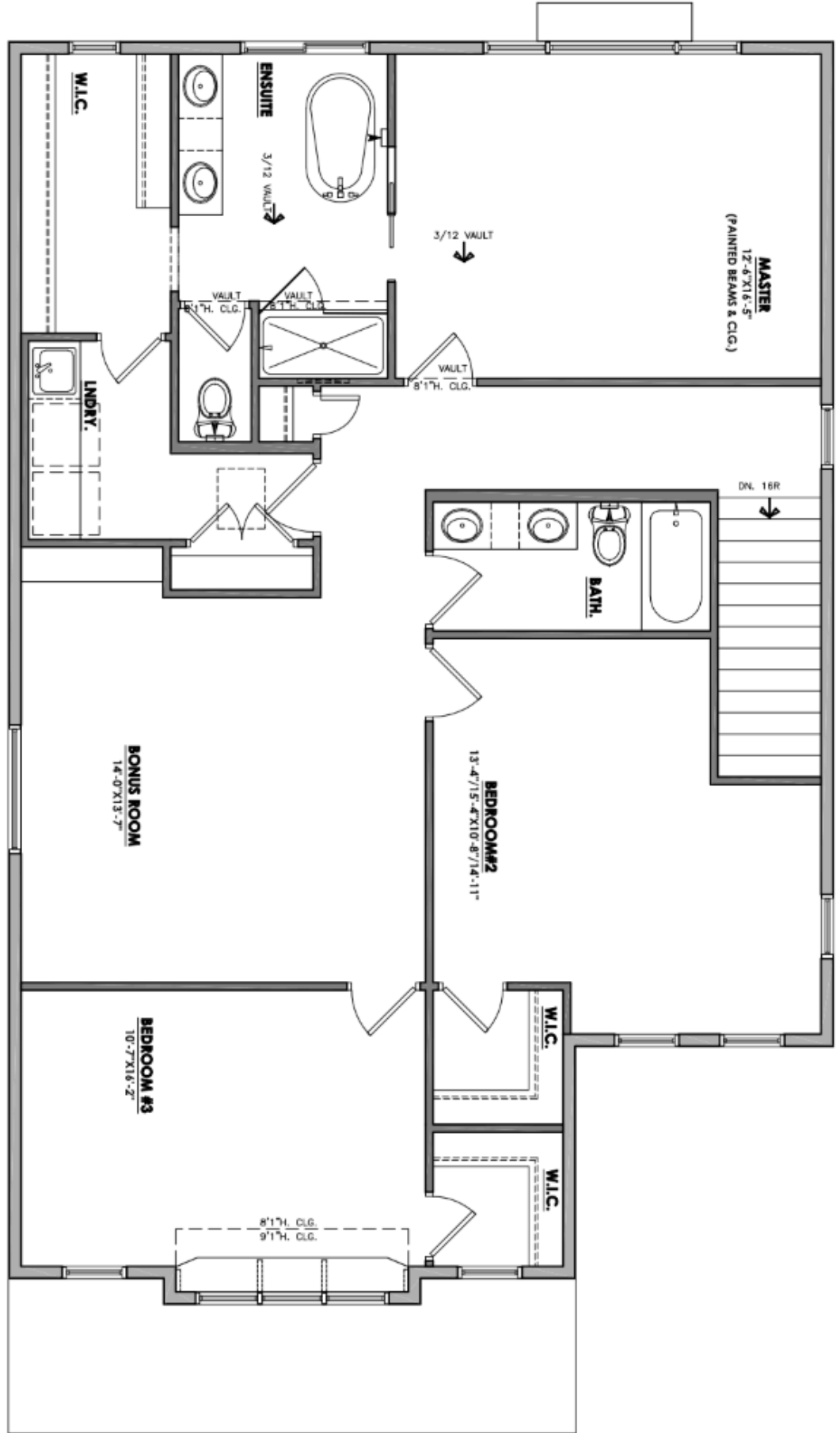
2473 Square Feet



**24 SYDWYCK CI**

Main Floor

2 Living Rooms    3 Bedrooms    2.5 Bathrooms    Double Garage    2-Story    2473 Square Feet



**24 SYDWYCK CI**

Upper Floor



2 Living Rooms



3 Bedrooms



2.5 Bathrooms



Double Garage



2-Story



2473 Square Feet



CONTACT US AT

**HRD HOMES**

[WWW.BUILDHRD.COM](http://WWW.BUILDHRD.COM)

[@HRDHOMES\\_](https://www.instagram.com/HRDHOMES_)

5015 51 Ave

Stony Plain, AB

[sales@buildhrd.com](mailto:sales@buildhrd.com)

587-991-9405



## HOME FEATURES

- CUSTOM VENETIAN PLASTER HOOD FAN & FIREPLACE DESIGN
- OAK WOOD ACCENTS
- CUSTOM DESIGNED FEATURE WALLS IN THE DINING ROOM & PRIMARY BEDROOM
- DOUBLE GARAGE & RV BAY
- AIR CONDITIONING
- GARAGE WITH HEATER, FLOOR DRAIN AND HOT & COLD HOSE BIBS