



HOME REFLECTIONS DESIGN

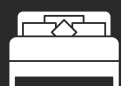
24 SYDWYCK CI



These are preliminary renderings ONLY and are subject to change



2 Living Rooms



3 Bedrooms



2.5 Bathrooms



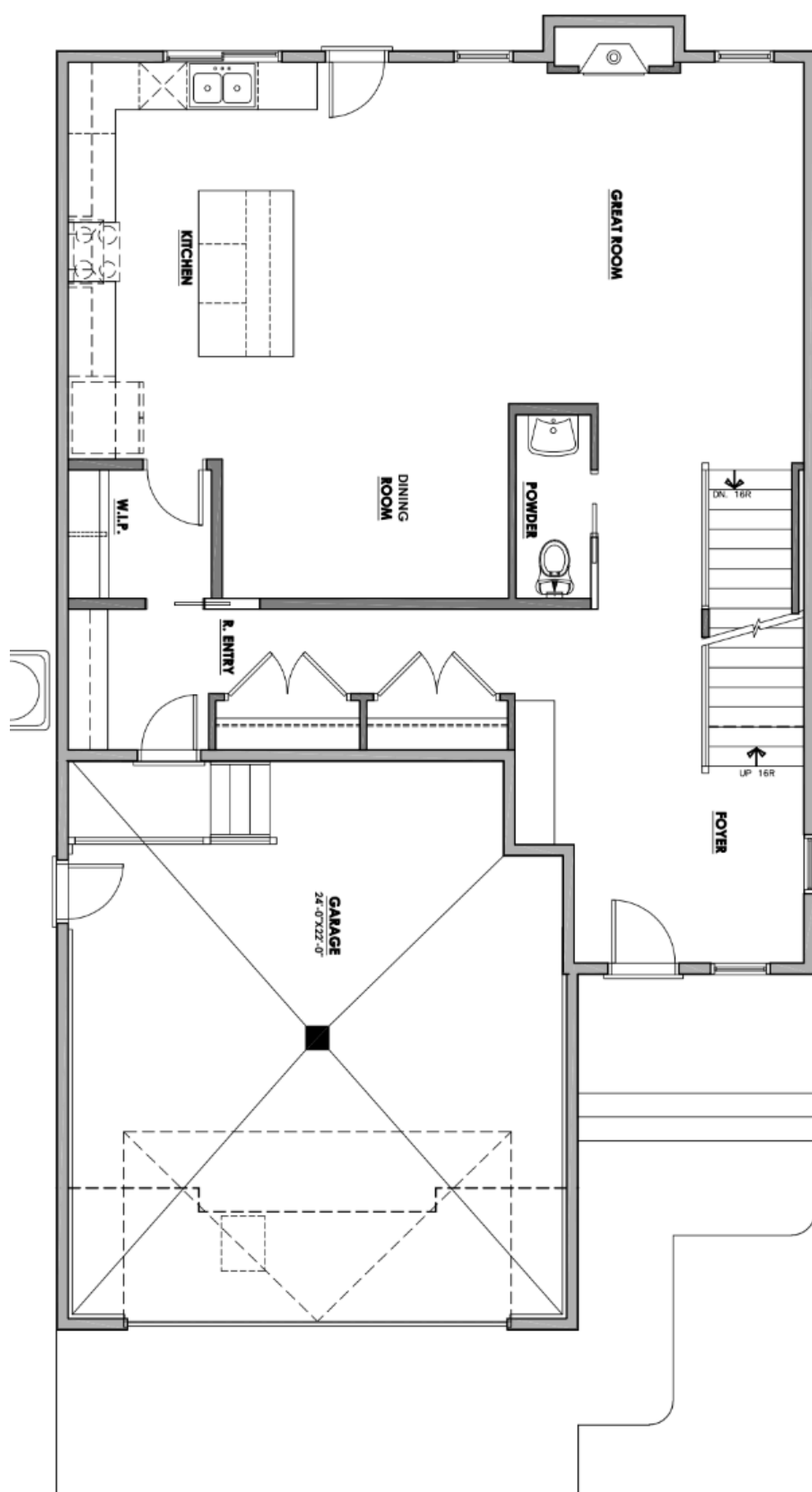
Double Garage



2-Story

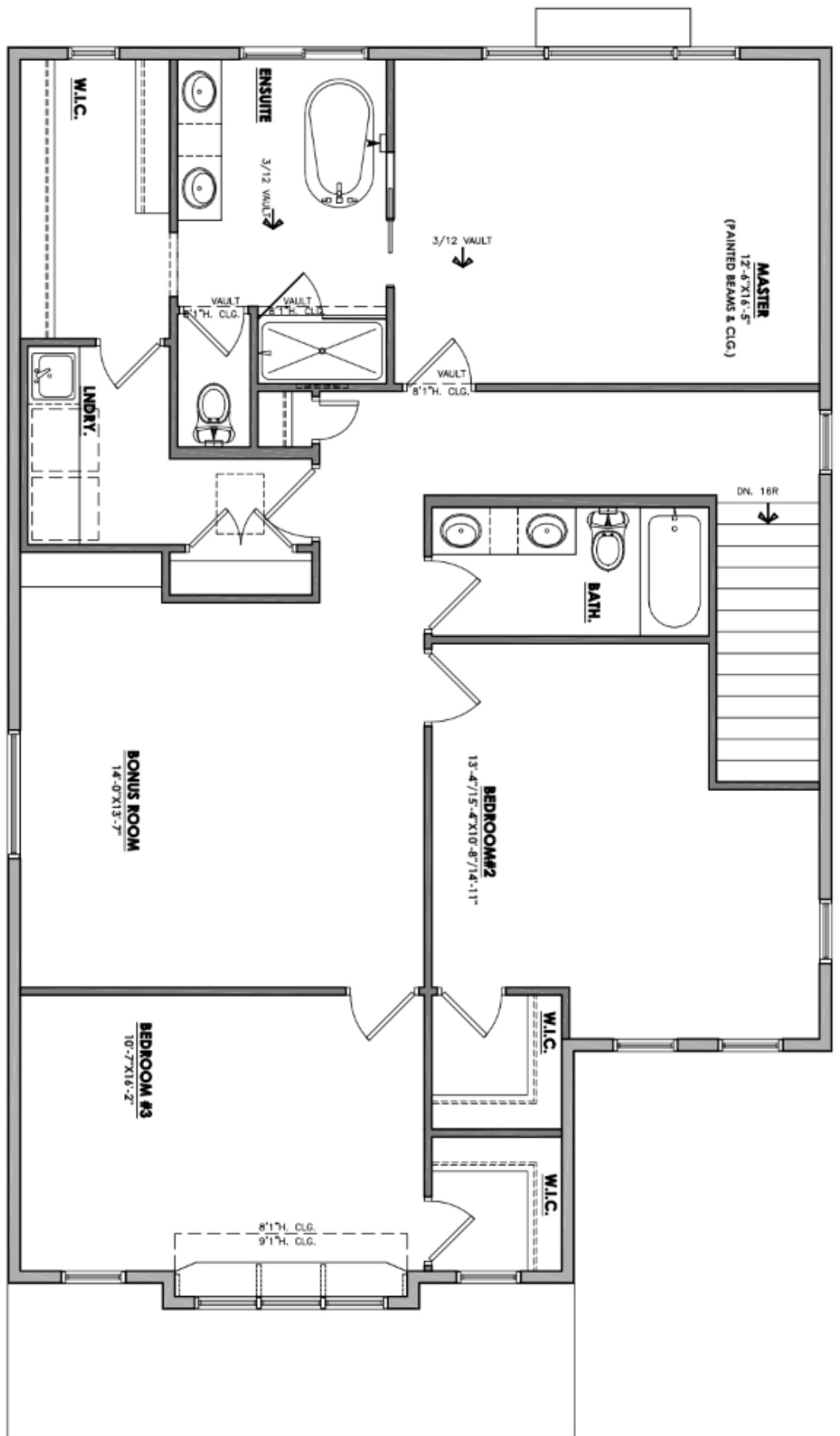


2473 Square Feet



Main Floor



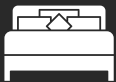


24 SYDWYCK CT

Upper Floor



2 Living Rooms



3 Bedrooms



2.5 Bathrooms



Double Garage



2-Story



2473 Square Feet



CONTACT US AT

HRD HOMES

WWW.BUILDHRD.COM

[@HRDHOMES_](https://www.instagram.com/HRDHOMES_)

5015 51 Ave

Stony Plain, AB

sales@buildhrd.com

587-991-9405



HOME FEATURES

- CUSTOM VENETIAN PLASTER HOOD FAN & FIREPLACE DESIGN
- OAK WOOD ACCENTS
- CUSTOM DESIGNED FEATURE WALLS IN THE DINING ROOM & PRIMARY BEDROOM
- DOUBLE GARAGE & RV BAY
- AIR CONDITIONING
- GARAGE WITH HEATER, FLOOR DRAIN AND HOT & COLD HOSE BIBS

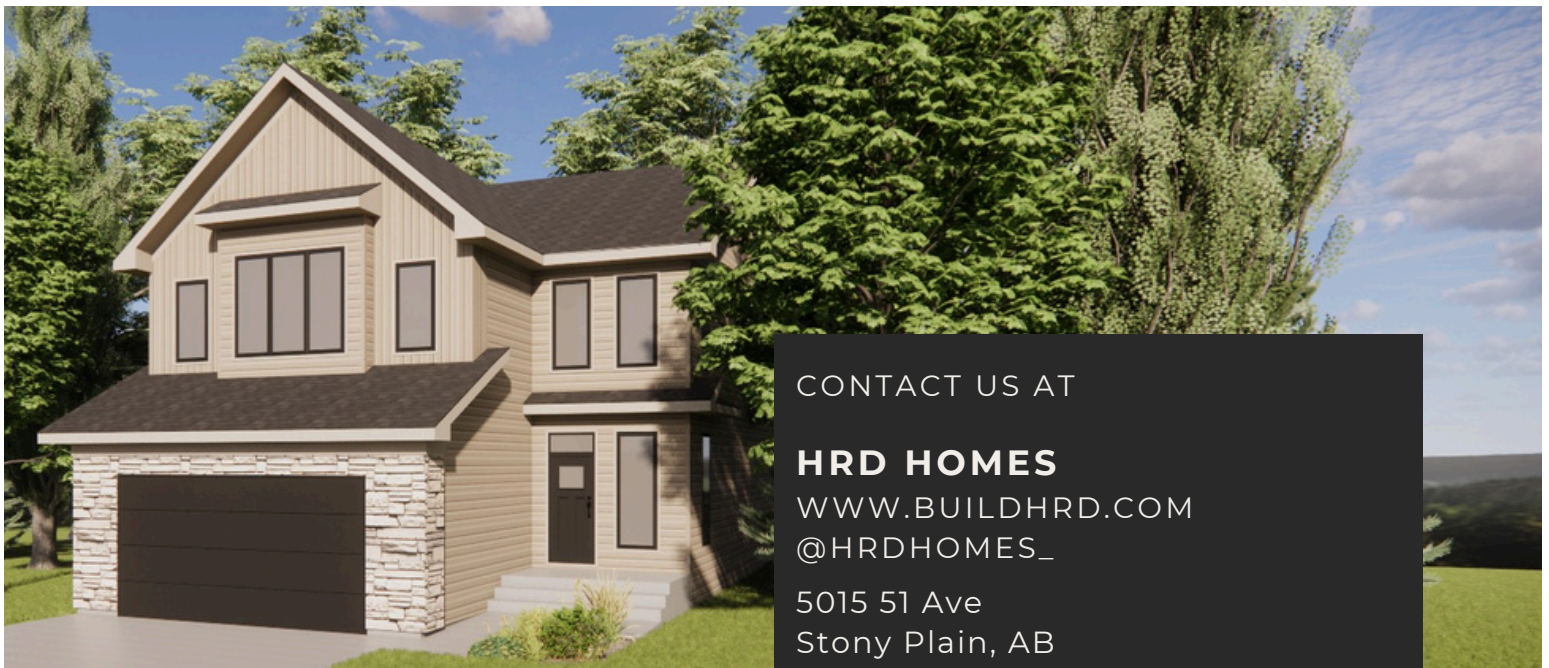


24 SYDWYCK CIRCLE SPRUCE GROVE

UPGRADED FEATURES & ENHANCEMENTS

THIS HOME INCLUDES PREMIUM UPGRADES BEYOND THE STANDARD SPECIFICATIONS, OFFERING ADDED VALUE, STYLE, AND FUNCTIONALITY!

- **CABINETRY:** 48"H UPPER CABINETS UPGRADED FROM 42"H
ADDED FURNITURE KICK TO ELEVATE KITCHEN ISLAND
- **COUNTERTOPS:** 2CM QUARTZ COUNTERTOPS IN LAUNDRY ROOM UPGRADED
FROM LAMINATE TOPS
- **HOODFAN:** VENETIAN PLASTERED HOODFAN WITH BLOWER INSERT UPGRADED
FROM A STAINLESS STEEL CHIMNEY STYLE FAN
- **KITCHEN PLUMBING:** CHAMPAGNE BRONZE KITCHEN SINK FAUCET UPGRADED
FROM CHROME
- **ENSUITE SHOWER TILE:** 2.5X8 VERTICAL STACKED SHOWER WALL TILE
UPGRADED FROM 12X24 STANDARD WALL TILE
- **FIREPLACE:** TAPERED VENETIAN PLASTERED FIREPLACE WITH STAINED CUSTOM
MAPLE MANTLE
- **FEATURE WALLS:** CUSTOM DESIGNED WALL MOULDING PAINTED IN NEUTRAL
ACCENT COLOUR IN DINING ROOM & PRIMARY BEDROOM



CONTACT US AT

HRD HOMES

WWW.BUILDHRD.COM

@HRDHOMES_

5015 51 Ave

Stony Plain, AB

sales@buildhrd.com

587-991-9405