



HOME REFLECTIONS DESIGN

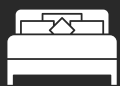
SIERRA



These are preliminary renderings ONLY and are subject to change



2 Living Rooms



3 Bedrooms



2.5 Bathrooms



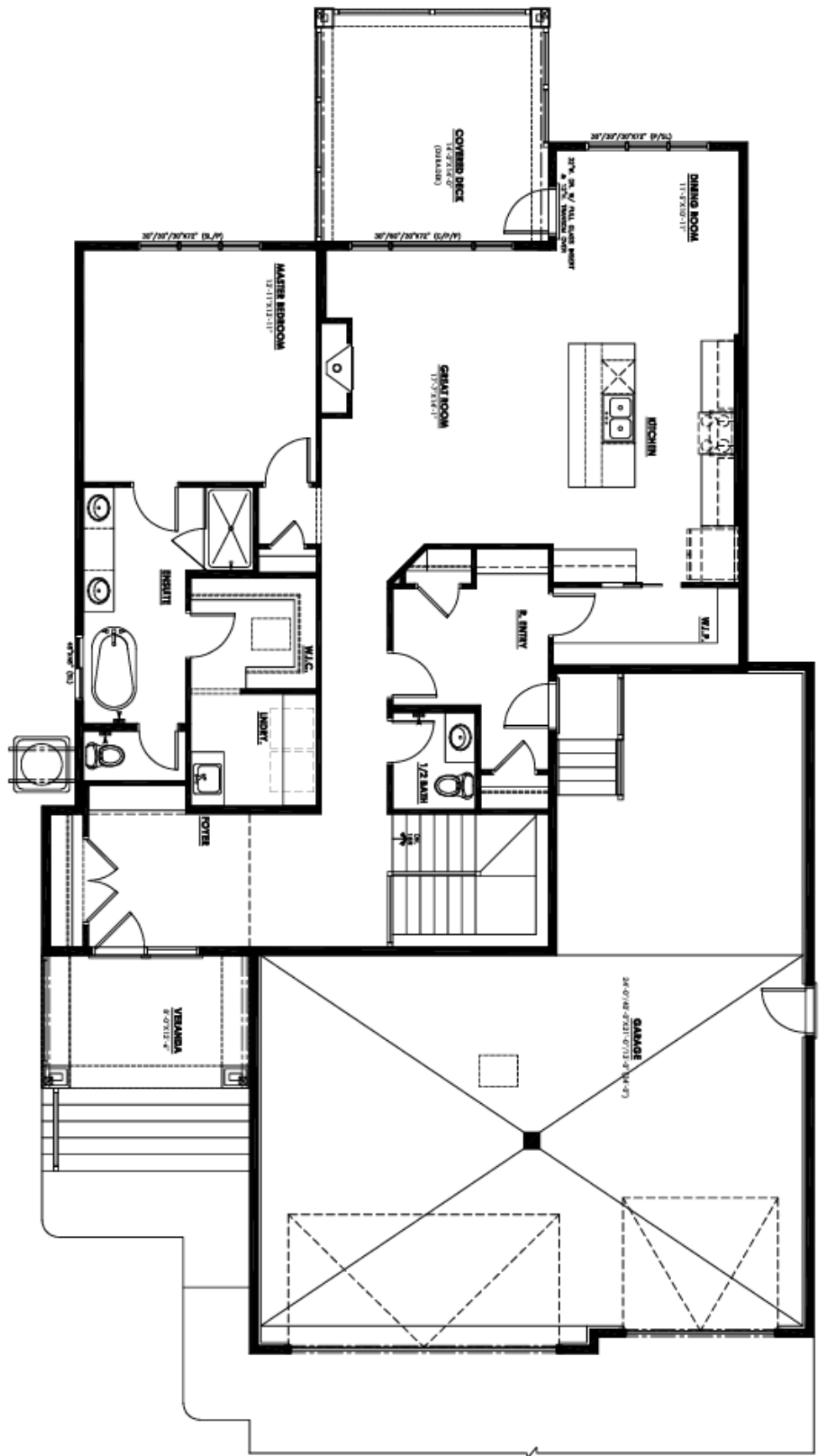
Double + RV
Garage



Bungalow



1636 Square Feet

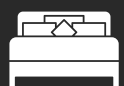


209 DEER PARK BLVD

Main Floor



2 Living Rooms



3 Bedrooms



2.5 Bathrooms



Double + RV Garage



Bungalow



1636 Square Feet



CONTACT US AT

HRD HOMES

WWW.BUILDHRD.COM

[@HRDHOMES_](https://www.instagram.com/HRDHOMES_)

5015 51 Ave

Stony Plain, AB

sales@buildhrd.com

587-991-9405



HOME FEATURES

- CUSTOM VENETIAN PLASTER HOOD FAN & FIREPLACE DESIGN
- OAK WOOD ACCENTS
- CUSTOM DESIGNED FEATURE WALLS IN THE DINING ROOM & PRIMARY BEDROOM
- DOUBLE GARAGE & RV BAY
- AIR CONDITIONING
- GARAGE WITH HEATER, FLOOR DRAIN AND HOT & COLD HOSE BIBS