



# HOME REFLECTIONS DESIGN

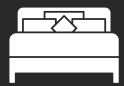
DREW



These are preliminary renderings ONLY and are subject to change



1 Living Rooms



1 Bedrooms



1.5 Bathrooms



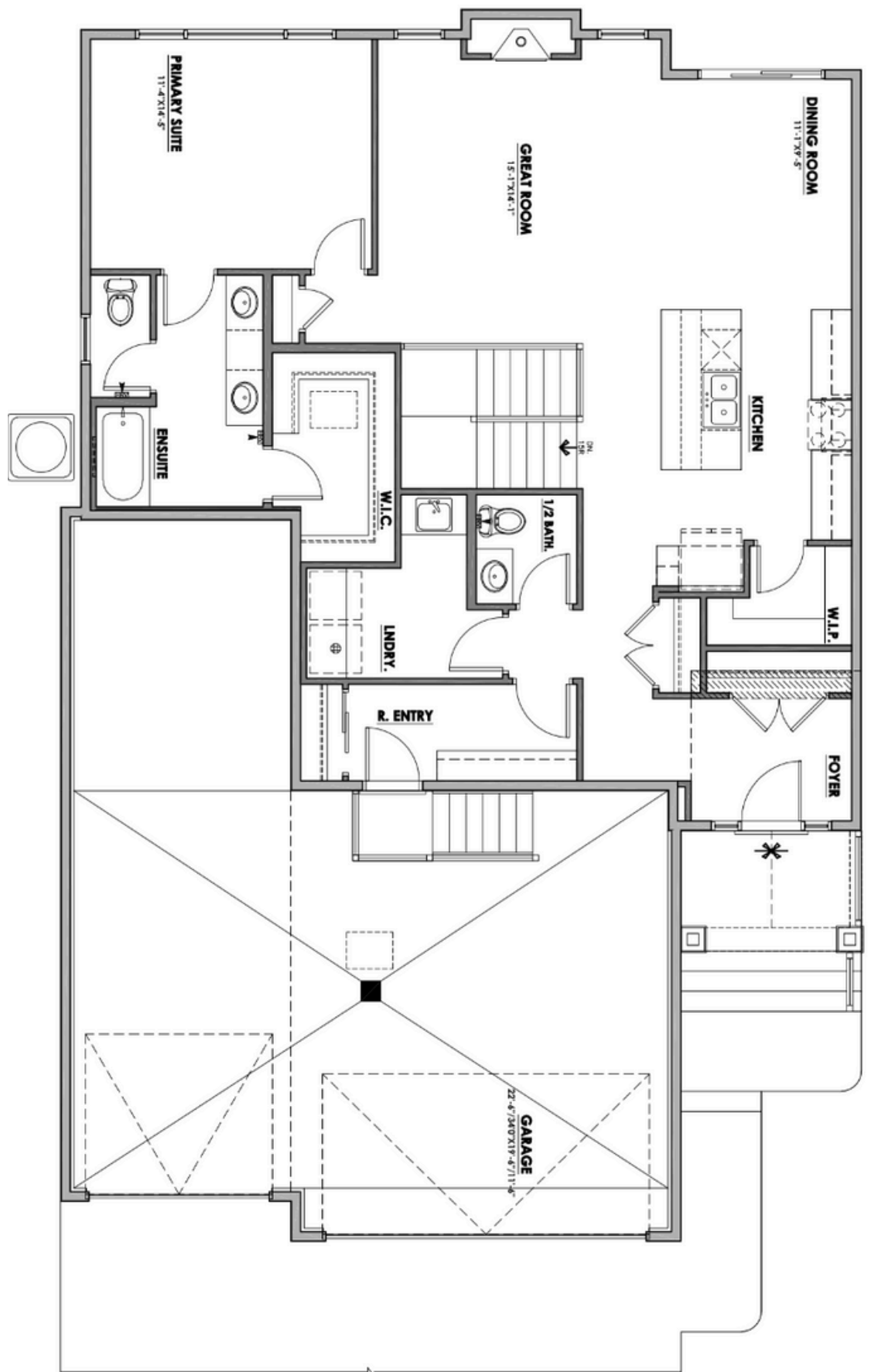
Double + RV  
Garage



Bungalow



1340 Square Feet



### 13 DARBY CRES

Main Floor



1 Living Rooms



1 Bedrooms



1.5 Bathrooms



Double + RV  
Garage



Bungalow



1340 Square Feet





CONTACT US AT

**HRD HOMES**

[WWW.BUILDHRD.COM](http://WWW.BUILDHRD.COM)

[@HRDHOMES\\_](https://www.instagram.com/HRDHOMES_)

5015 51 Ave

Stony Plain, AB

[sales@buildhrd.com](mailto:sales@buildhrd.com)

587-991-9405



## HOME FEATURES

- CUSTOM VENETIAN PLASTER HOOD FAN & FIREPLACE DESIGN
- OAK WOOD ACCENTS
- CUSTOM DESIGNED FEATURE WALLS IN THE DINING ROOM & PRIMARY BEDROOM
- DOUBLE GARAGE & RV BAY
- AIR CONDITIONING
- GARAGE WITH HEATER, FLOOR DRAIN AND HOT & COLD HOSE BIBS



## 13 DARBY CRESCENT SPRUCE GROVE

### UPGRADED FEATURES & ENHANCEMENTS

THIS HOME INCLUDES PREMIUM UPGRADES BEYOND THE STANDARD SPECIFICATIONS, OFFERING ADDED VALUE, STYLE, AND FUNCTIONALITY!

- **CABINETRY:** 48"H UPPER CABINETS UPGRADED FROM 42"H  
STAINED OAK ISLAND UPGRADED FROM THERMOFOIL  
ADDED FURNITURE KICK TO ELEVATE KITCHEN ISLAND
- **COUNTERTOPS:** 2CM QUARTZ COUNTERTOPS IN LAUNDRY ROOM UPGRADED  
FROM LAMINATE TOPS
- **HOODFAN:** VENETIAN PLASTERED HOODFAN WITH BLOWER INSERT UPGRADED  
FROM A STAINLESS STEEL CHIMNEY STYLE FAN
- **KITCHEN & ENSUITE PLUMBING:** CHAMPAGNE BRONZE PLUMBING FIXTURES &  
BATHWARE UPGRADED FROM CHROME
- **ENSUITE SHOWER TILE:** 2.5X9.75 VERTICAL STACKED SHOWER WALL TILE  
UPGRADED FROM 12X24 STANDARD WALL TILE
- **FIREPLACE:** TAPERED VENETIAN PLASTERED FIREPLACE WITH STAINED OAK  
MANTLE
- **FEATURE WALLS:** CUSTOM DESIGNED WALL MOULDING IN DINING ROOM &  
PRIMARY BEDROOM  
PRIMARY BEDROOM FEATURE WALL PAINTED IN AN ACCENT COLOUR



CONTACT US AT

**HRD HOMES**

[WWW.BUILDHRD.COM](http://WWW.BUILDHRD.COM)

@HRDHOMES\_

5015 51 Ave

Stony Plain, AB

[sales@buildhrd.com](mailto:sales@buildhrd.com)

587-991-9405